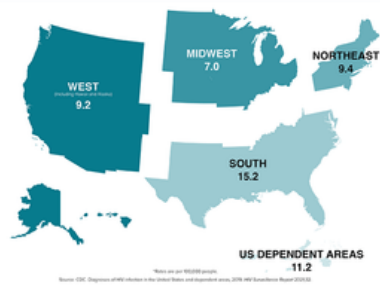


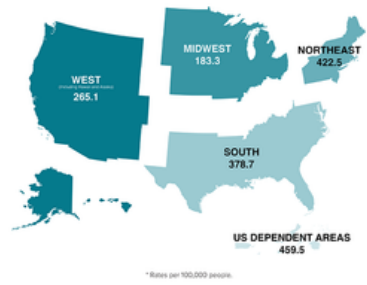
# SNAPSHOTS

# FROM ACROSS THE U.S.

Rates of New HIV Diagnoses in the US and Dependent Areas by Region, 2019\*

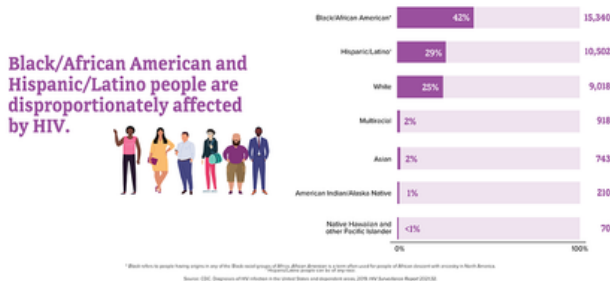


People with Diagnosed HIV in the US and Dependent Areas by Region of Residence, 2019\*



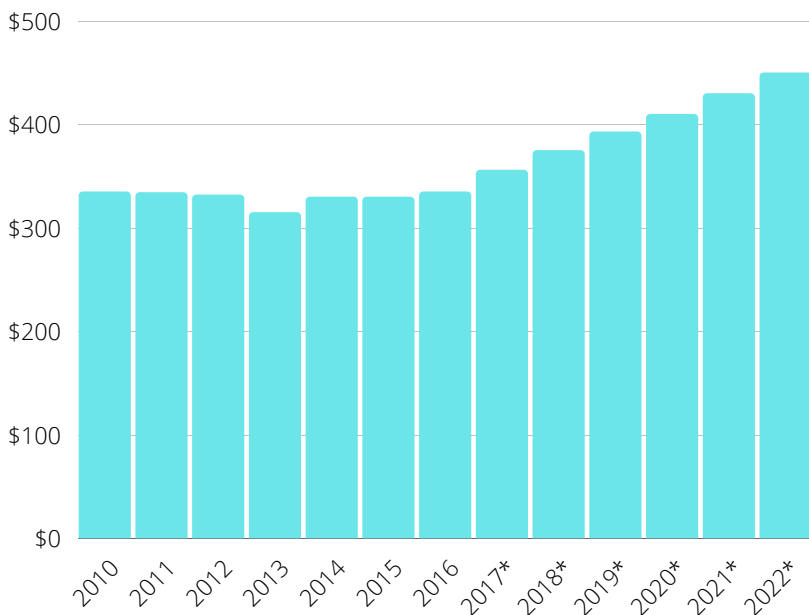
The South has the highest number of people living with HIV. The Northeast and the U.S. Dependent Areas have the highest rates of people living with HIV.  
(Rates are the number of cases of disease per 100,000 people.)

New HIV Diagnoses in the US and Dependent Areas by Race/Ethnicity, 2019



HIV diagnoses by race and ethnicity, we see that Black/African American people are most affected by HIV. In 2019, Black/African American people accounted for 42% (15,340) of all new HIV diagnoses. Additionally, Hispanic/Latino people are also strongly affected. They accounted for 29% (10,502) of all new HIV diagnoses.

## HOPWA Funding History in Millions



**FY 2023 ASK:**  
**\$600 Million**



394,252 persons living with HIV/AIDS are in need of housing assistance.



95% of HOPWA TBRA and PH have achieved housing stability.



In 2018-2019, for every dollar spent on HOPWA, \$2.79 was leveraged by grantee.

For direct links to CDC reports and other sources, please visit the

NAHC website at:

[www.nationalaidhousing.org](http://www.nationalaidhousing.org)